

Afnog 2007 Workshop: FreeBSD Install: Abuja, Nigeria

FreeBSD is designed to be a server operating system. This becomes apparent during the installation process. The FreeBSD installer is a console-based (not GUI) install process. In addition, installation of desktop features such as Gnome and KDE is only partially accomplished using the FreeBSD installer program.

The FreeBSD installer interface is not intuitive (your author's opinion), so pay close attention to the steps

Hint: Use the tab key to move between choices, but use the SPACE bar to select an item. Pay close attention to what is chosen before you press ENTER. This may save you from having to redo the installation process.

[Chapter 2](#) of the FreeBSD Handbook covers the entire installation process for FreeBSD in much more detail than we'll do here. [Chapter 5](#) covers configuring the X server, fonts, and your choice of Gnome or the KDE desktop in detail.

At this point you should have the FreeBSD Install Discs 1 and 2 with you.

Some Notes

- Some steps have screen captures to help you with the installation process, but not all steps.
- Please read the instructions in this document and on the screen entirely before taking action. If you don't you may make incorrect choices and possibly have to restart the installation process.
- If you are confused about any steps please ask the instructor or assistants for help.

Initial Boot from Install Disc 1

- Turn on the power for your machine :-)
- Immediately place the first CD-ROM of the FreeBSD 6.1 install set in your machine's CD-ROM drive.
- You'll see an initial boot menu with several choices. The first two choices look something like this:

```
1. Boot FreeBSD [default]
2. Boot FreeBSD with ACPI disabled
...
```

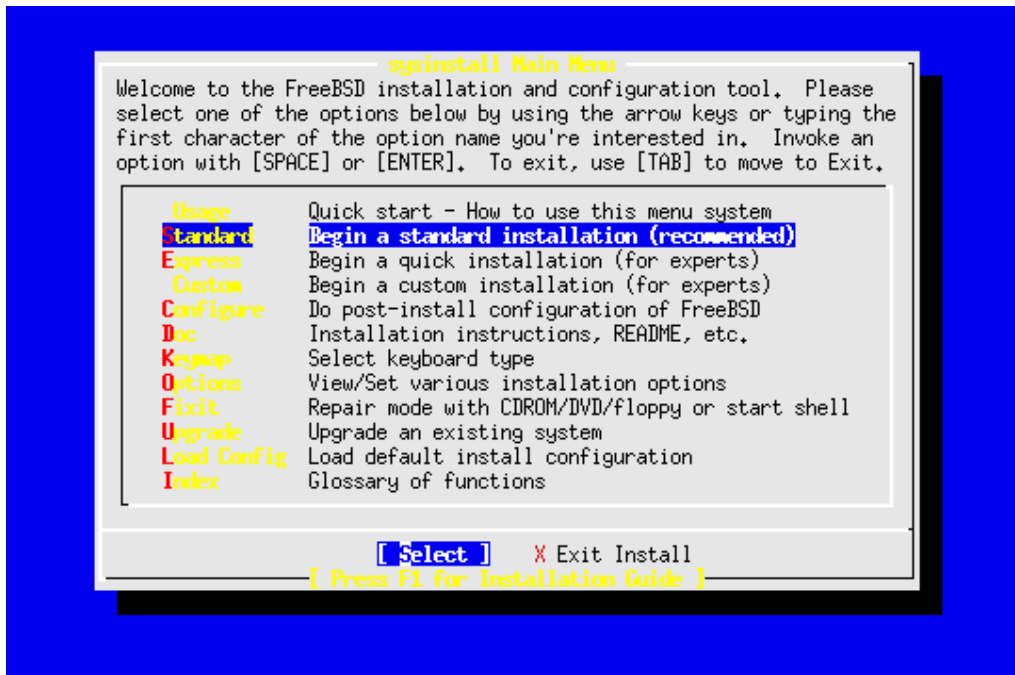
- Select the first choice, or just press ENTER.

Possible Optional Initial Screens

In some cases you see two additional screens that require answers. These are:

1. **Question:** "Please choose a country, region, or group..."
Answer: Enter the country of your workshop location (in this case Nigeria, or choice 161).
- **Question:** "Console driver for FreeBSD..."
Answer: Select the "US ISO Keymap" for this workshop (others may choose a different keymap based on the keyboard in use).
 - Now you'll see the *Sysinstall* main menu. During the workshop we'll use the Sysinstall utility on several occasions to do further configuration of our FreeBSD installations.

Sysinstall main menu



- Move the cursor down by using the DOWN-ARROW and select Standard. The press ENTER to select this choice. As you can see there are quite a number of additional options. Sysinstall not only steps you through installing FreeBSD, but it also allows you to do post-install configuration, such as installing additional software packages and distributions. In addition you can set keyboard options, view documentation, configure network interfaces, multiple startup options, and so forth.
- Next you'll see a message indicating that you are about to partition your hard drive for a FreeBSD installation. If you have more than one hard drive, then you'll need to indicate which drive to work on. At this point press OK to continue.
- Now you'll see a screen that looks *something* like this:

Sample FDISK partition screen

```

Disk name:      ad0      FDISK Partition Editor
DISK Geometry: 16383 cyls/16 heads/63 sectors = 16514064 sectors (8063MB)

Offset      Size(ST)      End      Name  PType  Desc  Subtype  Flags
-----
0           63           62      -     6      unused  0        >
63         4193217      4193279  ad0s1  2      fat    14       >
4193280    1008        4194287  -     6      unused  0        >
4194288    12319776    16514063 ad0s2  4      extended 15       >

The following commands are supported (in upper or lower case):

A = Use Entire Disk      G = set Drive Geometry  C = Create Slice  F = `DD' mode
D = Delete Slice        Z = Toggle Size Units  S = Set Bootable  I = Wizard m.
T = Change Type         U = Undo All Changes   Q = Finish

Use F1 or ? to get more help, arrow keys to select.

```

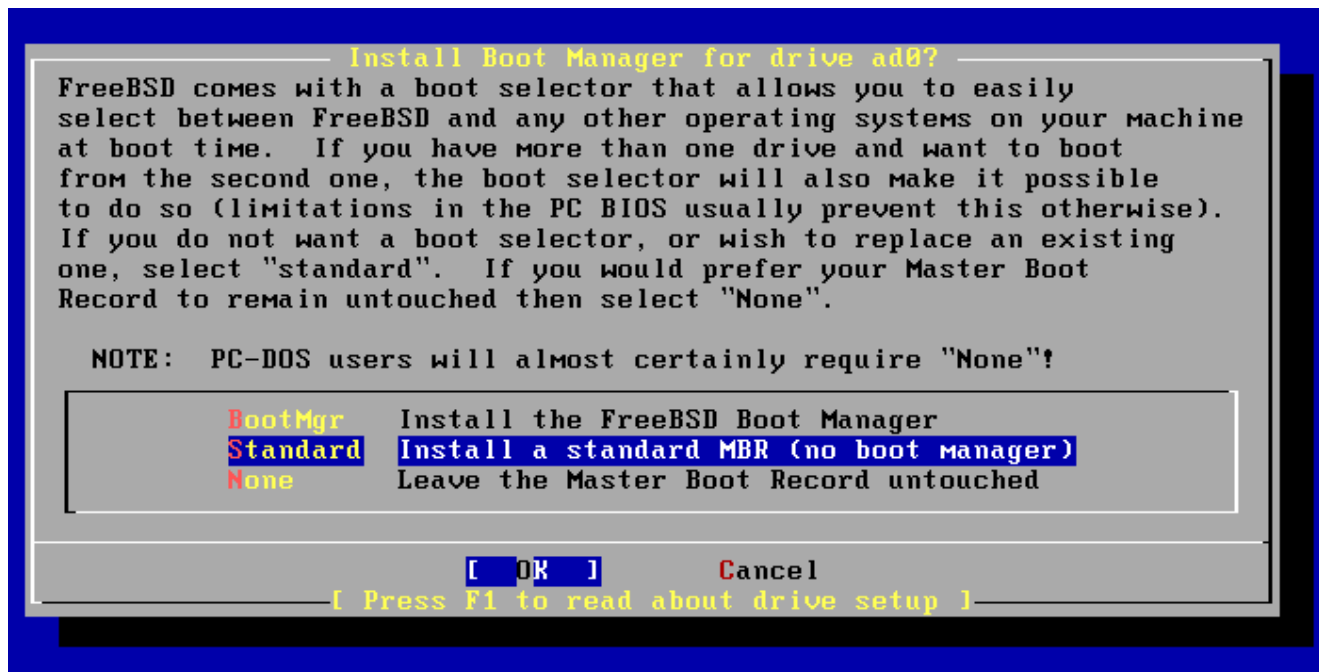
READ and FOLLOW these instructions

- Assuming you have unused space on your hard drive, then you could highlight this partition and press "C" to Create Slice in this area. For purposes of the workshop we are going to use the entire drive, Select the fat partition and press "d" to delete it. Then press "A" to use the entire drive for

our FreeBSD installation.

- By pressing "A" you should end up with a single FreeBSD slice for the entire drive with the correct filesystem choice of 165 (FreeBSD) chosen.
- Now press "Q" to finish. This is not intuitive, but Q will actually save the information you just entered for use in a few more steps.
- Next you are prompted whether you wish to install a Boot Manager or not. This is an important decision. First here is what this screen looks like:

Sysinstall Boot Manager Menu



Now here is your decision matrix:

1. FreeBSD is the *only* operating system on your machine: you can choose "Standard".
- You have additional operating systems (Windows) and you wish to be able to start all of them: possibly choose "BootMgr".
 - You have another boot manager installed that can boot FreeBSD (i.e. Grub under Linux!): choose "None".
 - As we are going to use the whole hard drive and just install FreeBSD during this workshop you can choose "Standard". For future expandability you could choose "BootMgr". At this point. Choose "OK" and press ENTER to continue.
-

Pay attention...

- Now it's time to create partitions inside of the disk slice you created for FreeBSD. Press OK to the screen asking you if you want to do this.
- At this point the FreeBSD Disklabel Editor should present itself. Assuming we have used the entire drive on your machine your initial screen should look something like this (**Note:** your drive size will likely be different):

Sysinstall Disklabel Editor

```

FreeBSD Disklabel Editor
Disk: ad0      Partition name: ad0s1  Free: 16514001 blocks (8063MB)
Part          Mount          Size Newfs  Part          Mount          Size Newfs
-----
The following commands are valid here (upper or lower case):
C = Create      D = Delete    M = Mount pt.
N = Newfs Opts  Q = Finish    S = Toggle SoftUpdates
T = Toggle Newfs U = Undo      A = Auto Defaults    R = Delete+Merge
Use F1 or ? to get more help, arrow keys to select.

```

Now it is time to create the various partitions we want to use.

Your instructor will step you through this, or will give you the information you need in class.

We may simply use the "Auto Defaults" by pressing "A" and then "Q" to leave this screen, or we may specify exactly how your partitioning of the slice should be set up.

If you are going to manually create partitions here are the steps to do this:

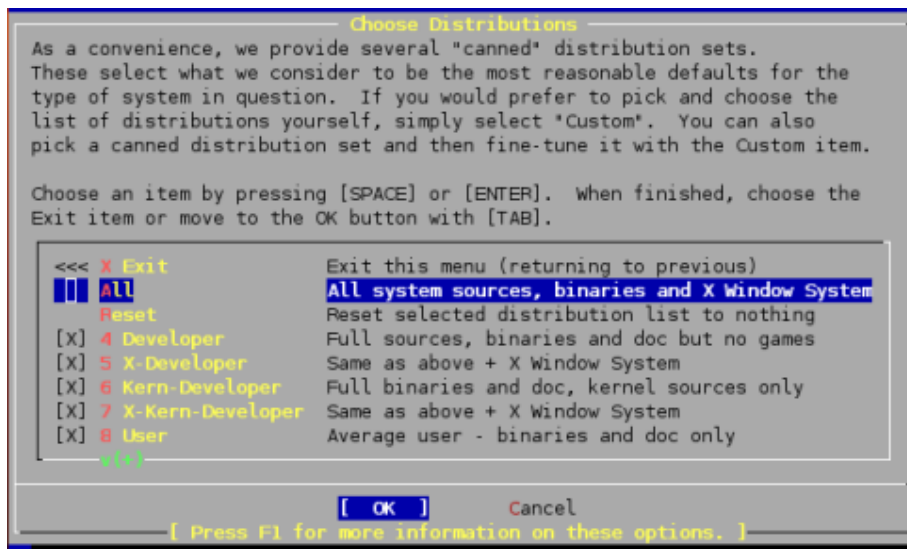
1. Press "C" to start
- Partition size (as noted above) is 512M, so erase what's in the dialogue and enter "512M"
 - Press ENTER for OK
 - Choose "FS" for filesystem
 - To specify a mount point for the partition enter in "/" (no quotes) and press OK

The defaults that FreeBSD picks are fine. Now you would repeat this process for each partition, but note that when you create the SWAP partition to pick a filetype of SWAP and not FS. For the final partition, /usr, simply press enter when the partition size dialogue appears as you will be using the rest of the disk.

If you need more help your instructor and assistants will help step you through this piece of the install. It's important to give enough space to the partitions so that the install works and class runs smoothly during the week. It's common to make mistakes here and it's easy to fix if you are installing for the first time.

- When you are finished setting up the partitions in your slice, then press "Q" to leave the Disklabel editor.
- Next you'll be asked what distribution set you wish to install. This looks like:

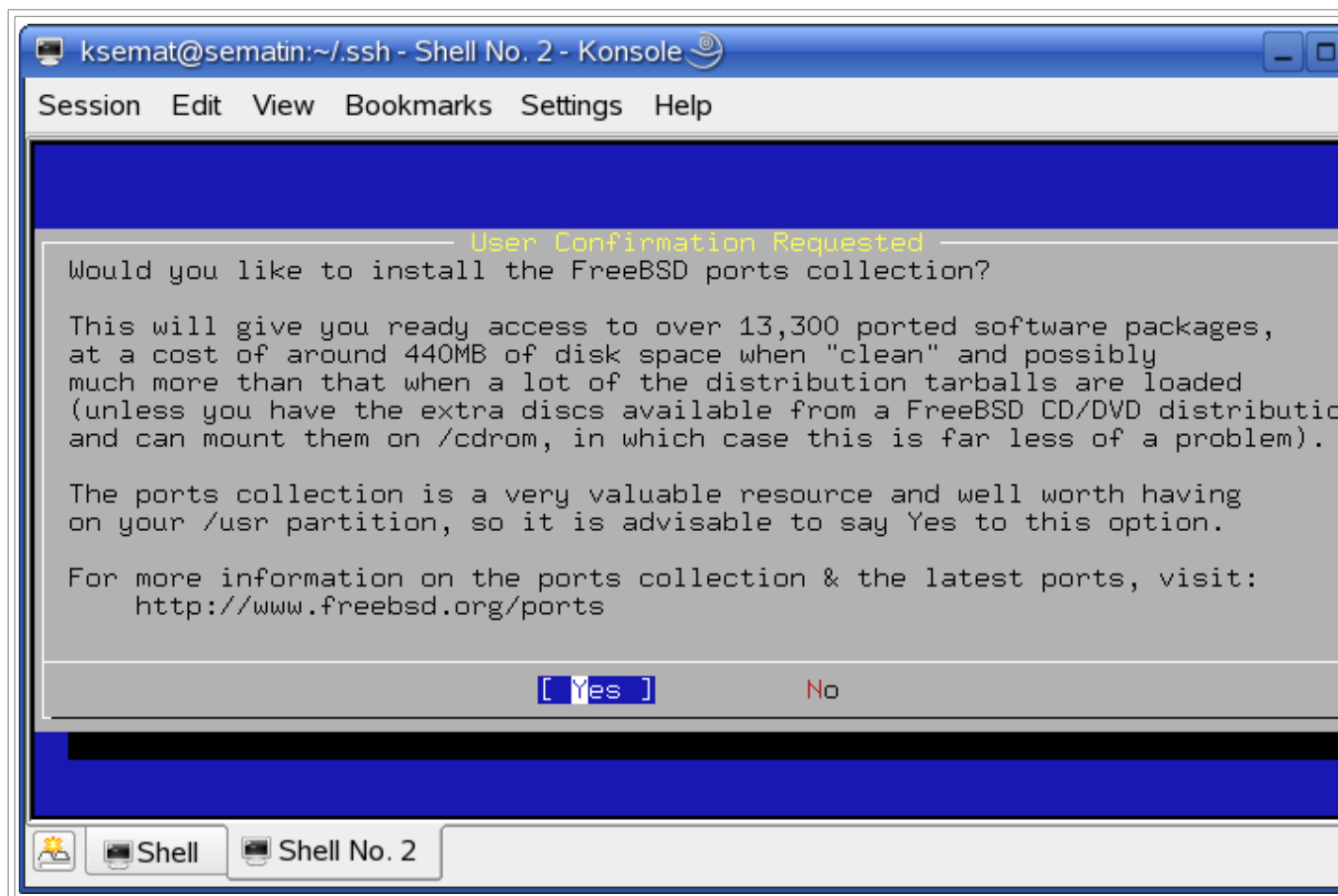
Choose Distributions



<== CRITICAL
Use the SPACE key the
first time to select, NOT
tab.

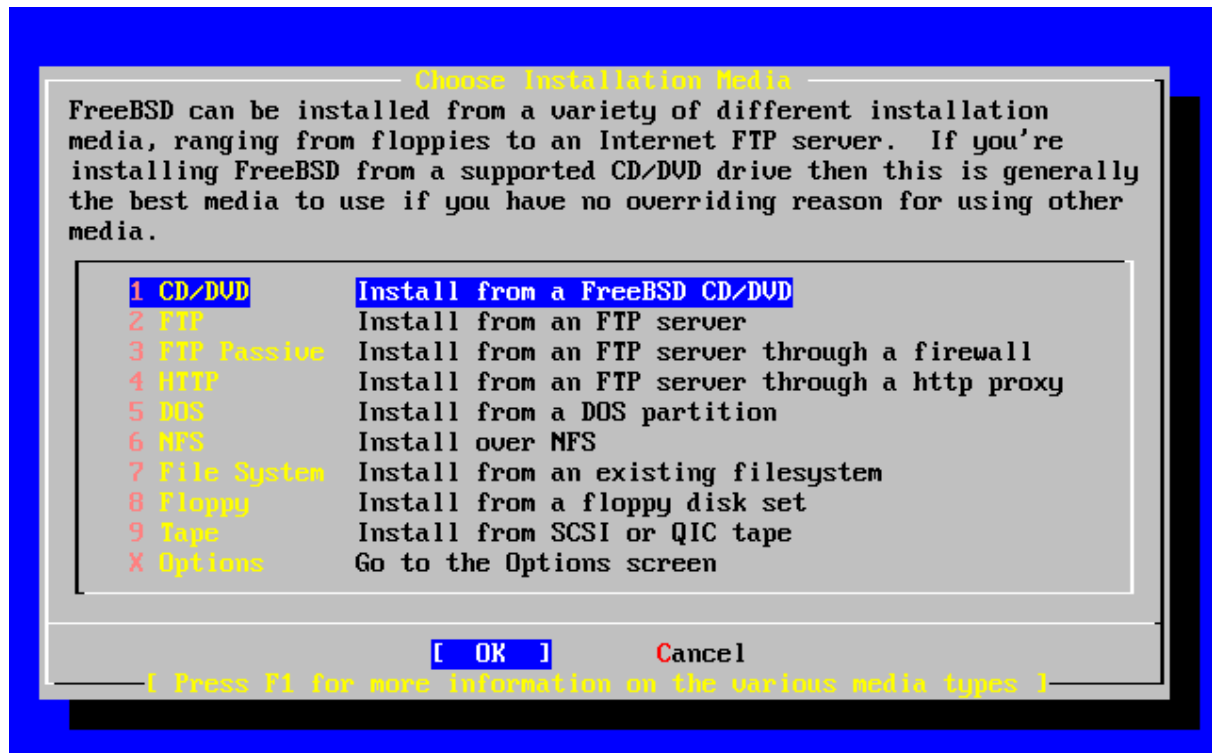
Follow these steps *closely*:

For our workshop you should highlight "All", then press the SPACE key (not tab!). If you don't see all the Distributions selected with an "X", and/or you are not asked to install the Ports collection, then you have not correctly chosen "All". You will need to exit the installation and start over.



- You should be prompted if you wish to install the Ports collection. Say "Yes" to this. We'll be using the Ports collection throughout the week to install additional software.
- Now, and this is a bit confusing, you are placed back in the Choose Distributions windows again. At this point you should use the UP-ARROW to move the cursor to the first choice, which is "X Exit". Once highlighted press ENTER to Exit from the menu.
- At this point you asked where your installation media resides. In our case it is on your CD/DVD-ROM drive. The menu prompt looks like this:

Choose Installation Media



You should leave the first option, CD/DVD highlighted and press ENTER for OK.

- You'll receive a confirmation and last chance warning before proceeding. Up to this point no changes have actually been saved to your disk. You could back out of the installation with absolutely no changes made. But, at this point we are ready to continue so press ENTER for "YES".

FreeBSD is installed!

At this point, technically speaking, FreeBSD is now installed on your machine. You could reboot your computer and FreeBSD would start. However, before doing this the Sysinstall utility gives you the opportunity to configure several important items. All of these items can be configured by hand, but the Sysinstall utility has been designed to make this configuration much easier. So, the next bunch of steps are post-FreeBSD-installation items that we are going to take care of.

Post Installation

Say "no" to configuring ethernet devices or SLIP devices.

Now you'll receive numerous queries about items you can configure. The answers to these are:

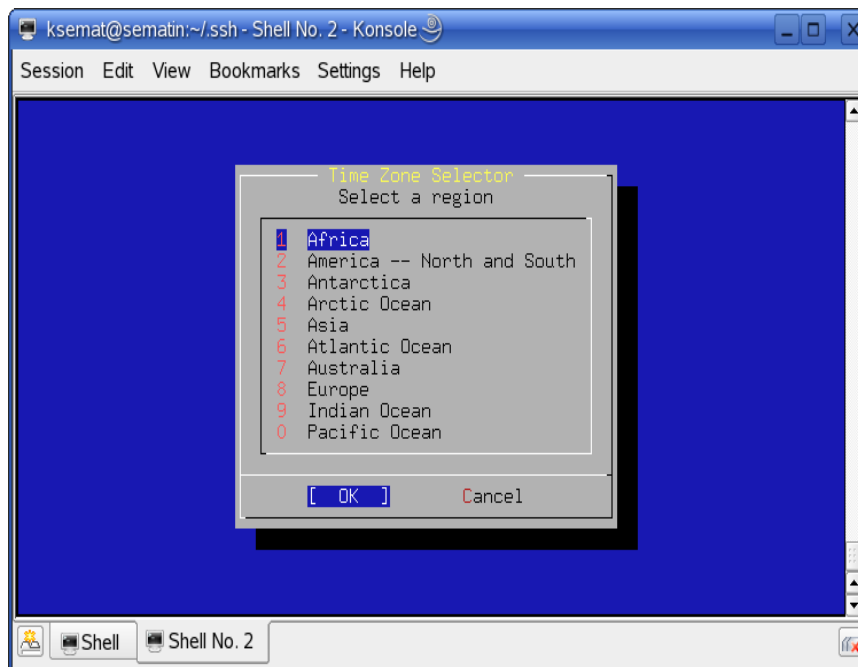
- "No" to Network Gateway.
- "No" to inetd. [To be discussed later]
- "Yes" to ssh. [We may update later]
- "No" to anonymous FTP.
- "No" to NFS server.
- "No" to NFS client.
- "No" to customize console settings.
- "Yes" to set the timezone.
- "No" to the following prompt:

"Is this machine's CMOS clock set to UTC? If it is set to local time or you don't know,

please choose NO here!"

Now you'll see a list of regions for your time zone that looks like this:

Select Your Region (Time Zone)



Choose number 1, or "Africa" and press ENTER for "OK".

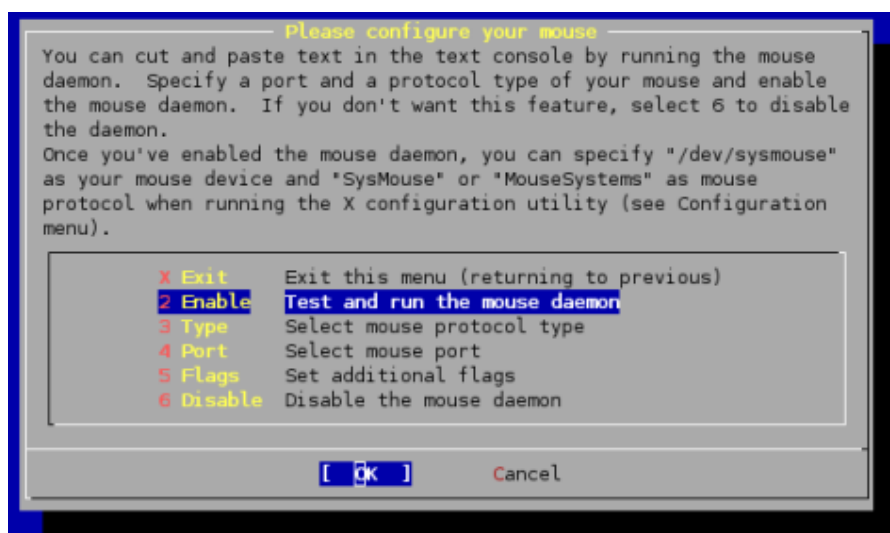
- In the next list choose "Nigeria" which is number 34 and press ENTER for "OK".
- Respond "Yes" to the 'WAT' looks reasonable' prompt'.

Additional Steps

- "No" to Linux binary compatibility. [To be noted later.]
- "Yes" to PS/2 or Serial Mouse.

When you see the Select Mouse Protocol type menu, which looks like this:

Select Mouse Protocol



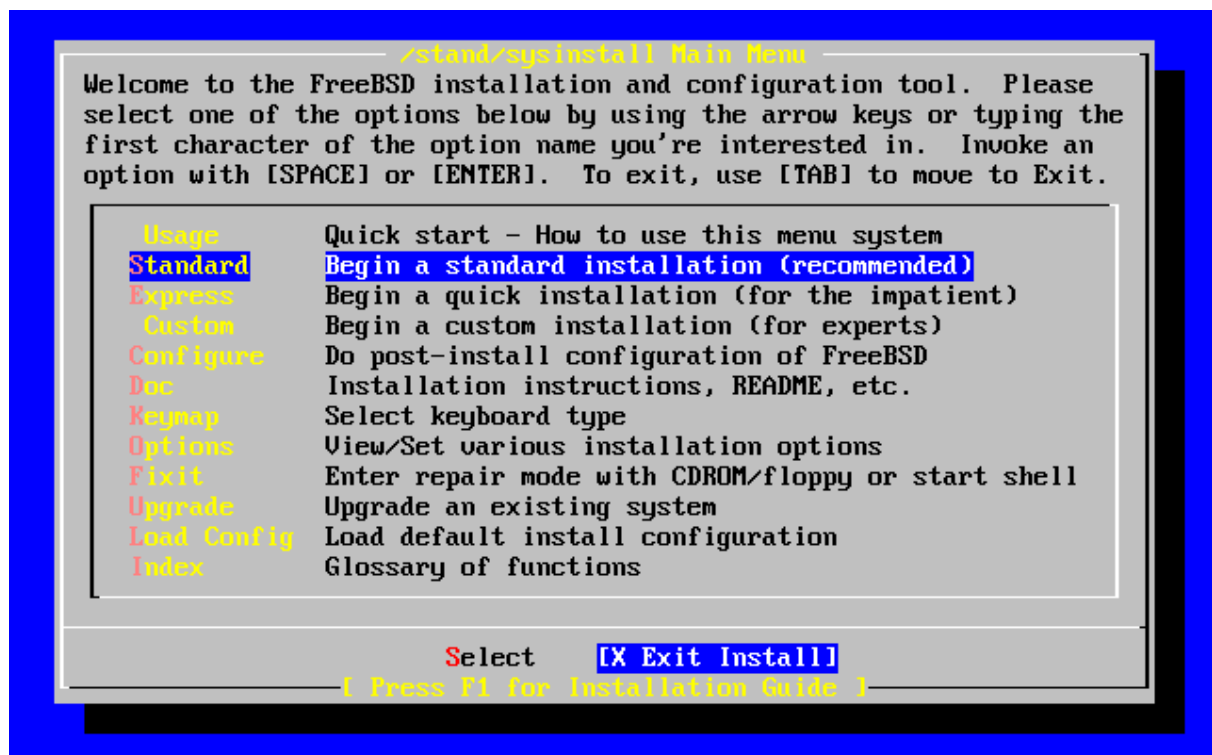
Choose number 2, "Enable" and press ENTER for "OK".

- If you move your mouse and you see the cursor moving on the screen, then press ENTER for "Yes" when asked, "Is the mouse cursor moving?"
- Move the cursor up to X or "Exit" and press ENTER to exit the mouse configuration menu. This step was not critical, but can be useful to allow you to copy and paste text using your mouse in console windows.

Additional Steps Continued

- Answer "Yes" to browsing Package collection.
- At the next prompt Select ALL and press Enter for OK.
- In the Alphabetical list that comes next Select the following packages using the space bar.
- bash-3.1.17
- cvsup-without-gui-16.1h_2
- gnome-desktop-2.16.1
- Answer "No" to adding a user account. We'll add user accounts after installation completes.
- Press ENTER for "OK" to set password for root account.
- The password we are going to use will be given out in class. **Please use this password and *do not change it during the week*** in case an instructor needs access to your machine to help with exercises.
- When prompted with, " Visit the general configuration menu for a chance to set any last options?" answer "No".
- Now you will be dropped back to the Sysinstall main menu:

Sysinstall Main Menu



Move your cursor to highlight "X Exit Install" at the bottom of the menu (or just press "X"), and press ENTER to exit this menu.

- Answer "Yes" to exit and remove the FreeBSD Disc 2 CD-ROM from your machine's CD-ROM drive as it is rebooting.

During Initial Reboot

You will be asked to type in some random text to generate keys for the SSH server. The more text you type, the more random your keys will be.

After Initial Reboot

At this point you will be staring at your initial logon screen for FreeBSD 6.2, which should look something like this:

```
FreeBSD/i386 (Amnesiac) (ttyv0)
```

```
login:
```

```
Password:
```

